

DS RAZOR

for Windows

Interactive Management and Reporting for
Active Directory and Windows File Systems

Post-Installation Guide

Visual Click Software, Inc.

Copyrights

This manual contains proprietary information that is protected by copyright. The information in this manual is subject to change without notice. No part of this manual may be reproduced or transmitted in any form or by any means, electronic or mechanical, including photocopying and recording, for any purpose other than the licensee's personal use without prior written permission of Visual Click Software. The software described in this manual is furnished under a license granted by Visual Click Software to the licensee. This software may be used or copied only in accordance with the terms of the license agreement.

© 2007 by Visual Click Software. **All rights reserved.**

Trademarks

DSRAZOR® and Visual Click® are registered trademarks of Visual Click Software, Inc. Novell®, NetWare®, and NDS® are registered trademarks of Novell, Inc. Netscape is a registered trademark of Netscape Communications Corporation in the U.S. and other countries. Shockwave® is a registered trademark and Macromedia Flash™ is a trademark of Macromedia Inc. Microsoft®, Windows®, Windows NT®, and Active Directory® are registered trademarks of Microsoft Corporation in the United States and other countries. Macintosh® is a registered trademark of Apple Computer, Inc. Solaris™ is a trademark of Sun Microsystems, Inc. UNIX® is a registered trademark of The Open Group in the U.S. and other countries. IBM® and AIX® are registered trademarks of IBM Corporation. Other marks cited in this document are the property of their respective owners.

Patents

U.S. Patent No. 6,438,742

Issue Date: August 20, 2002

Documentation Conventions

Special information in this manual is presented using the following conventions:

- **Bold** text indicates commands, command-line options, and interface controls, such as the names of icons, menus, menu items, buttons, check boxes, and tabs.
- *Italic* text indicates variables that must be replaced with a value. It also indicates book titles and emphasized terms.
- `Monospace` text indicates data to enter, filenames, and code examples.

NOTE: Provides information that emphasizes or supplements important points in the main text.

IMPORTANT: Provides information essential to the completion of a task. Do not disregard an important note.

TIP: Offers information that helps apply techniques and procedures to meet specific needs.

CAUTION: Advises that failure to take or avoid a specified action could result in loss of data.

WARNING: Advises that failure to take or avoid a specific action *will* result in loss of data.

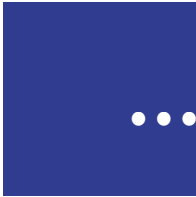
Contact Us

Thank you for using DSRAZOR. Visual Click Software is committed to the ongoing support of its products. For information and the latest downloads of the DSRAZOR product, see our web site at <http://www.visualclick.com>. For information, help, and to report problems associated with this product, or if you need features or functionality that are not currently offered by Visual Click Software, or if you have questions about the product or need assistance, contact our customer support team at supportw@visualclick.com. To purchase additional licenses, contact our sales team at sales@visualclick.com.

You can also contact us at the following mailing address:

Visual Click Software, Inc.
P.O. Box 161657
Austin, TX 78716

Pubrev 051007



Contents

Chapter 1. About This DSRAZOR Guide

Installing DSRAZOR on Separate Workstations	1
Updating DSRAZOR	2
Uninstalling DSRAZOR	2
About Tokens	3
Installing Tokens	3
Why You Need Tokens	3
Types of Tokens	4
Using and Managing Applets	5
About the Console	7
About the Viewer	9
About the Designer	12
Elements of Applets	16
About Windows	17
About Controls	18
Dropdown List Control	20
ListView Control	20
TreeView Control	21
Group Box Control	21
BitMap Control	22
Button Control	22
Text Control	22
Edit Text Control	23
Check Box Control	23

Connecting Controls	24
About Services	25
Listing Services	26
Display Services	26
Button Services	27
Edit Services	27
Check Box Services	27
Turning DSR Applets into Stand-alone Executables	28



About This DSRAZOR Guide

DSRAZOR is a powerful application that allows you to create and customize your own applets. The interactive applets that DSRAZOR for Windows helps you design make it easier to manage your Active Directory (AD) and Windows file servers. You can use any of the predefined applets, or you can customize your own.

The *DSRAZOR for Windows Post-Installation Guide* is an introduction to the basic elements of Visual Click Software's DSRAZOR for Windows. The [DSRAZOR for Windows User Guide](#) contains everything in the *DSRAZOR for Windows Post-Installation Guide* as well as more in-depth procedures and information.

Installing DSRAZOR on Separate Workstations

You can install DSRAZOR for Windows to a single server path on your network for use by separate workstations. This enables you to access your applets from different workstations. From each workstation that is using DSRAZOR from the shared directory, you must re-install DSRAZOR to the shared directory (to apply certain required Registry settings).

To install DSRAZOR from a workstation to run from a shared network location:

- 1 From the uninstalled workstation, ensure that `DSRAZOR_INSTALL.EXE` is in the directory where you installed DSRAZOR.
- 2 Run `DSRAZOR_INSTALL.EXE`.
The InstallShield Wizard displays the **Welcome** page.
- 3 Select **Modify** and click **Next**.
- 4 Respond to the dialogs as required.

Updating DSRAZOR

Updating DSRAZOR does not overwrite existing applets, except for **DEFAULTW.DSR** (the **Console**). If you create an applet and it happens to have the same filename as a new applet in the update, the new applet will not be installed. To see if any new applets included in the update were not installed, refer to [DSRAZOR for Windows Ready-to-Run Applets](#).

How to update DSRAZOR:

- 1 In your browser go to <http://www.visualclick.com> and click **Download Free Trial**.
The **Download Free Trial** page is displayed.
- 2 Download the DSRAZOR for Windows Installation program (**DSRAZOR_INSTALL.EXE**) and run it.
The InstallShield Wizard displays the **Welcome** page.
- 3 Select **Modify** and click **Next**.
- 4 Respond to the dialogs as required.

Uninstalling DSRAZOR

It is easy to uninstall DSRAZOR if you need to.

How to uninstall DSRAZOR:

- 1 Run the DSRAZOR for Windows Installation program (**DSRAZOR_INSTALL.EXE**).
The InstallShield Wizard displays the **Welcome** page.
- 2 Select **Remove** and click **Next**.
- 3 If you created new applets (***.DSR** files), they were not deleted by the InstallShield Wizard. You must delete the files and the DSRAZOR installation directory manually.

About Tokens

A token file is a small text file with a **.TKN** extension that authorizes the full use of any file with a DSRAZOR applet extension (***.DSR**). You do not need a token to design or modify applets in the **Designer**.

Installing Tokens

To install a token file, copy it to the same directory where you installed DSRAZOR. If the applet is not in the same directory where you installed DSRAZOR, the copy of the token file must also be in the directory of the applet you are running.

Why You Need Tokens

To gain full functionality of DSRAZOR for Windows, you must have a token file.

Tokens designate the number of user objects they will authorize. Your token must designate at least the total number of user objects in your Active Directory Domain or in your Container.

If a trial mode message is displayed, then DSRAZOR does not have a current or proper token. If DSRAZOR is in trial mode, only the first three items of any applet's ListView will be shown.

Types of Tokens

The DSRAZOR token file is a small text file with a **.TKN** extension that authorizes DSRAZOR's use. The token designates the number of user objects authorized.

There are several token types:

- **Evaluation.** This type of token authorizes use of DSRAZOR on an unlimited number of Windows user objects in an unlimited number of Active Directory Domains for a specific period of time, after which, all functions revert to the trial mode.
- **Subscription or Rental.** This type of token authorizes use of DSRAZOR on a specific number of Windows user objects in a specific Active Directory Domain or a specific container within an Active Directory Domain for a specific period of time, after which, all functions revert to the trial mode.
- **Perpetual.** This type of token authorizes use of DSRAZOR on a specific number of Windows user objects in a specific Active Directory Domain or a specific container within an Active Directory Domain for an unlimited amount of time. Typically, this style of token includes the additional ability to install maintenance and upgrade versions of DSRAZOR that are made available prior to the last date of maintenance specified by the token. Access to future maintenance and upgrade versions of DSRAZOR beyond the last date of maintenance requires renewing your maintenance each year to receive new tokens.

WARNING: Renaming or editing a token file will invalidate it.

CAUTION: Do not install a DSRAZOR update with a build date subsequent to the expiration date of the token. Installing an update or enhancement of DSRAZOR after the token's build date will place DSRAZOR in Trial Mode.

Using and Managing Applets

A DSRAZOR applet can be launched in a number of ways:

- from the **Console** ([page 7](#))
- from the **Viewer** ([page 9](#))
- by double-clicking it in Windows Explorer
- from the command line

Although DSRAZOR may be installed in and run from a single directory on the network, you **must** have the program installed on your workstation to launch **.DSR** files. You can save an applet as an **.EXE** to launch it from a workstation that does **not** have DSRAZOR installed (see [“Turning DSR Applets into Stand-alone Executables” on page 28](#)).

Applets with very large outputs run faster and smoother if they are output directly to a file. Applets with very large outputs can run for long periods, gathering information. A DSRAZOR applet that is in the process of outputting data to a file opens a separate Windows application that is displayed on the Windows taskbar. DSRAZOR will provide no other indication that a compilation program is running.

While running an applet, right-click over any ListView or TreeView within an applet to view a menu with options to save the output. A list can be saved to a comma-delimited file or to a print-ready text report (with a header and page numbering). Comma-delimited files are saved with quotation marks around each item and a comma as the separator.

Applets are created and edited in the **Designer**. Open the applets pre-fabricated with DSRAZOR and use their structure as a guide to using them in your own applets, or simply modify the pre-fabricated applets to suit your needs.

For information on each pre-fabricated applet, refer to [DSRAZOR for Windows Ready-to-Run Applets](#).

If you modify a pre-fabricated applet, consider saving it under a different name—a name that is unique to your uses. That way, you will still have the original applet intact if you need it in the future. If an applet that you create or modify has the same name as a pre-fabricated applet, the pre-fabricated applet will **not** be installed or updated when DSRAZOR is updated.

See [“Elements of Applets” on page 16](#) for more information on applets.

To launch an applet from the command line, type the following command:

```
path\dsrazor\dsrrun path\applet.dsr
```

where *path\dsrazor* is the path to where you installed DSRAZOR and *applet* is the **.DSR** filename of the applet you want to launch. Also, make sure that your current tokens are in the same directory as the applet.

NOTE: You can also launch an applet from Windows Explorer (by double-clicking it) or using a shortcut to it on your Desktop or in your **Start** menu.

To open an applet in the **Designer** from the command line, type the following command:

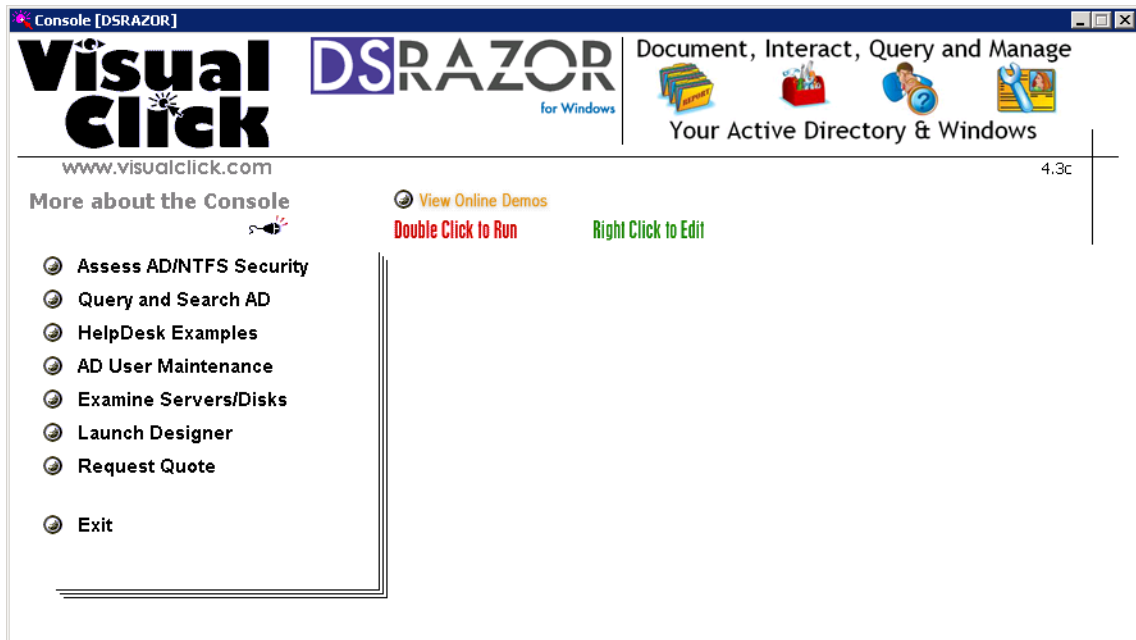
```
path\dsrazor\dsrdes path\applet.dsr
```

where *path\dsrazor* is the path to where you installed DSRAZOR and *applet* is the **.DSR** filename of the applet you want to launch. Also, make sure that your current tokens are in the same directory as the applet.

About the Console

The **Console** is a good place to start if you want to get started running and modifying DSRAZOR's many pre-fabricated applets. For an explanation of each pre-fabricated applet, refer to [DSRAZOR for Windows Ready-to-Run Applets](#).

Figure 1-1



To launch the **Console**:

- 1 Click on the Windows **Start** menu.
- 2 Select **Programs | DSRAZOR | Console**.

The **Console** is displayed.

The Console's main menu displays several selections down the left side. This list represents applet groups.

Each applet group contains several applets designed by Visual Click Software developers that perform various management functions.

To launch an applet from the **Console**:

- 1 Click the menu category in the left column where the applet is listed.
The applets available from the selected menu are displayed to the right of the menu name.
- 2 Double-click the applet in the right column to be launched.
The **Console** also allows you to customize the pre-fabricated applets to fit your network requirements.

To open an applet in the **Designer** from the **Console**:

- 1 Right-click the applet in the **Console**.
The selected applet is opened in the **Designer**.

IMPORTANT: The **Console** is itself a DSRAZOR applet with the filename **DEFAULTW.DSR**. If you create a console applet based on the **Console** (for example, to display applets you have built), you must **not** use the filename syntax **DEFAULT* .DSR**, as it will interfere with the **Console**.

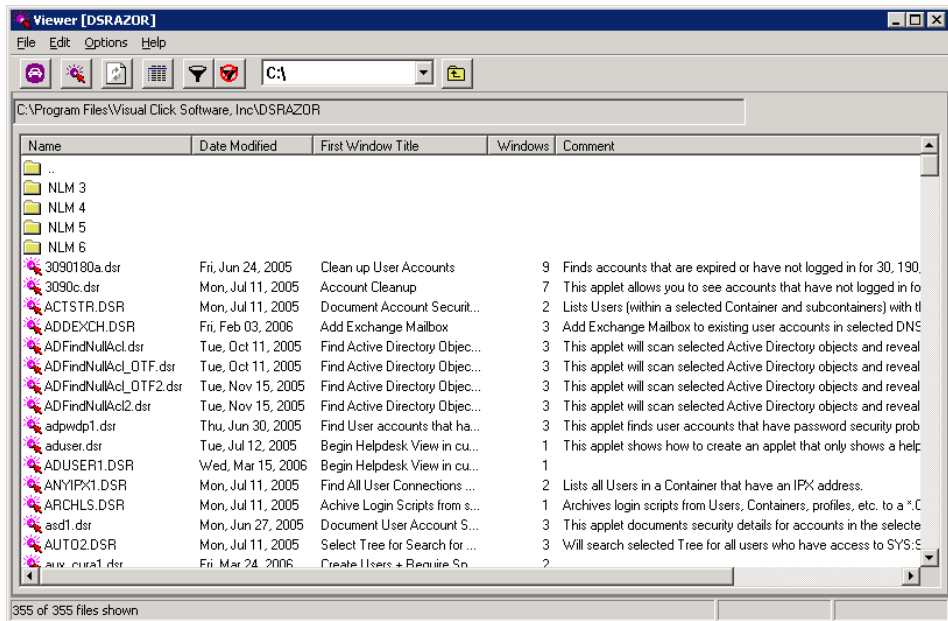
About the Viewer

The DSRAZOR **Viewer** allows you the convenience of viewing all your applets at once, like the DSRAZOR **Console**, but the **Viewer** offers more choices of how you can display your applets. Whereas the **Console** only displays the pre-fabricated applets or the applets you have edited it to display, the **Viewer** displays all applets in the DSRAZOR installation directory or any other directory you choose. With the **Viewer**, you also have the option of filtering which applets are displayed according to the number of windows they include (see [“About Windows” on page 17](#)), the types of services they use (see [“About Services” on page 25](#)), and whether or not they have comments.

From the **Viewer**, you can launch applets or open them in the **Designer**.

- To launch an applet from the **Viewer**, double-click the applet’s filename.
- To open an applet in the **Designer** from the **Viewer**, right-click the applet’s filename in the **Viewer**.

Figure 1-2



If you change any of the following settings, DSRAZOR saves your changes in a **.INI** file for the next time you run the **Viewer**.

- **You can sort the applets by column** (for example, Date Modified, First Window Title, Windows, Comment) by clicking the desired column heading.
- **You can resize a column** by moving your cursor over the dividing line between column headings until the double-arrow is displayed, holding down your left mouse button, dragging the cursor until you have reached the desired width, and then releasing the mouse button.
- **You can reorder the placement of the columns** (initially, the **Viewer** displays applets according to their **.DSR** filenames) by holding down your left mouse button over a column heading that you want to move, dragging it to the desired location, and then releasing the mouse button.
- **You can hide columns** by selecting **Options | Show/Hide Columns** from the **Main** menu, clearing the check boxes of the columns you want to hide, and then clicking **OK**.

To filter which applets are displayed in the **Viewer**:

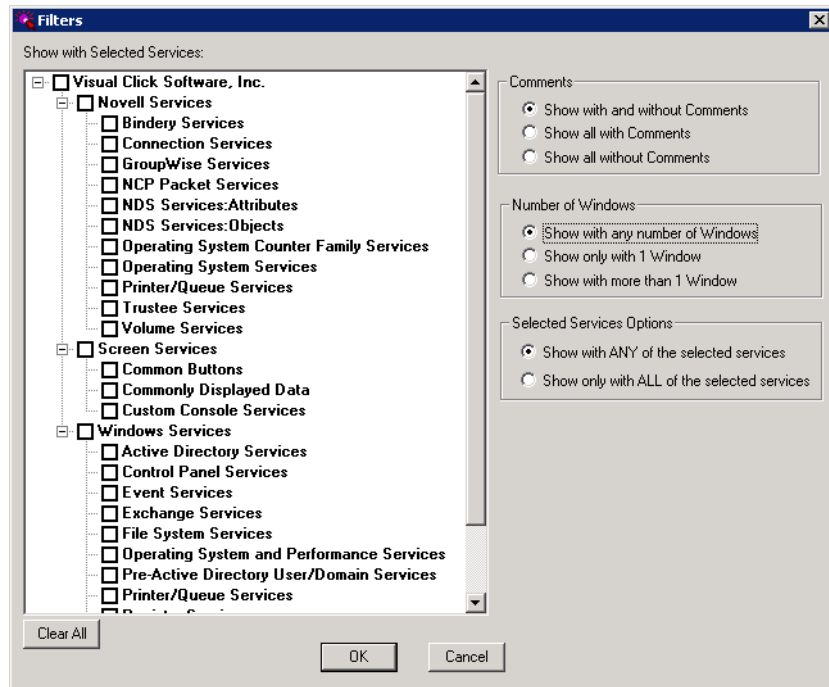
- 1 Click the **Edit Display Filters** icon.

Figure 1-3



The **Filters** dialog is displayed.

Figure 1-4



- 2 Select the check box(es) in the **Show with Selected Services:** pane that correspond with the services that you want the **Viewer** to display.
- 3 Select the desired filter(s) from the **Comments**, **Number of Windows**, and **Selected Services Options** sections.
- 4 Click **OK**.

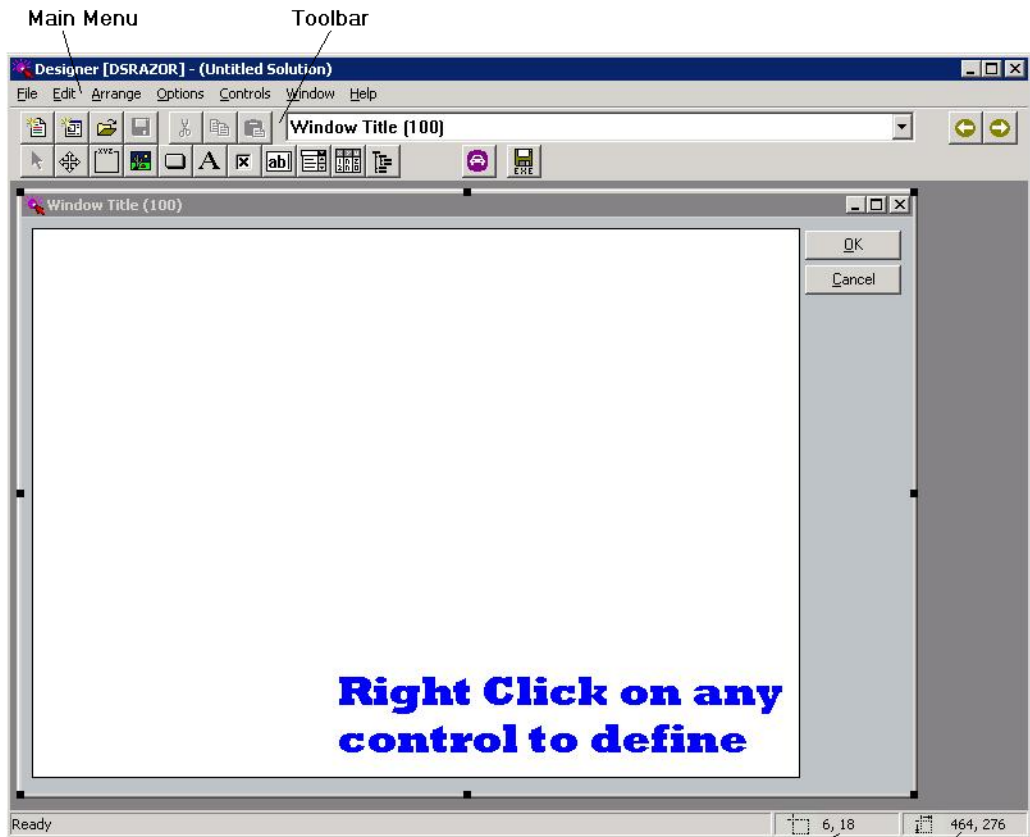
The applets that have the attributes you selected are displayed in the **Viewer**.

NOTE: DSRAZOR saves filters in a **.INI** file for future **Viewer** usage **only** if they pertain to applets' **Comments** or **number of Windows**. DSRAZOR does **not** retain filters based on applets' **Selected Service Options**.

About the Designer

The DSRAZOR **Designer** provides an easy-to-use graphical interface for Administrators to create their own applets or to customize the DSRAZOR pre-fabricated applets to fit their requirements. For information on each pre-fabricated applet, refer to [DSRAZOR for Windows Ready-to-Run Applets](#).

Figure 1-5



Location on window (for controls)

Initial location on monitor screen (for windows)

Size of selected window/control

The DSRAZOR **Designer** provides a drag-and-drop, point-and-click development environment for creating and modifying DSRAZOR applets.

By default, new applets are saved as with a * **.DSR** extension and can be run if DSRAZOR is installed. You can choose to save an applet as a stand-alone executable file so it can be used at workstations that do not have DSRAZOR installed; unlike with monolithic tools (for example, Active Directory Users and Computers), you and your users enjoy simple access to what you need without having to learn how to use a big console.

To launch the **Designer**:

From the **Start** menu, click **Programs | DSRAZOR | Designer**.

OR

From the **Console**, click **Launch Designer**.

By default, the toolbar displays across the top of the application window, below the menu bar. The toolbar provides quick mouse access to many tools and controls used in DSRAZOR. Many of the toolbar commands are duplicates of the menu commands.

There are two ways you can learn what a particular toolbar button action is.

- You can float the mouse over a button, and a tool tip will pop up with the command name.
- You can use the Help utility to activate the online help documentation for the toolbar button.

Table 1-1. Toolbar Commands










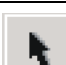


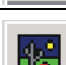









Click	To
	Create a new DSRAZOR file.
	Create a new window.
	Open a DSRAZOR file.
	Save the current file.
	Cut the current control to the clipboard.
	Copy the current control to the clipboard.
	Paste the control that was copied or cut into the clipboard.
	Change to the previous window in the list.
	Change to the next window in the list.
	Stop the drag-and-drop operation of a control that was started from either the toolbar or menu and revert the cursor to a pointer.
	Resize Window/Control.
	Start the drag-and-drop operation of a Group Box control.
	Start the drag-and-drop operation of a BitMap control.
	Start the drag-and-drop operation of a Button control.

Table 1-1. Toolbar Commands (Continued)

Click	To
	Start the drag-and-drop operation of a Text control.
	Start the drag-and-drop operation of a Check Box control.
	Start the drag-and-drop operation of an Edit Text control.
	Start the drag-and-drop operation of a Dropdown List control.
	Start the drag-and-drop operation of a ListView control.
	Start the drag-and-drop operation of a TreeView control.
	Test the current applet.
	Save the current applet as an application (*.EXE) for easy distribution.
Window Title field	An applet may have several windows working together. Select a window from this dropdown menu to display an applet window for editing.

Elements of Applets

Applets consist of the following:

- Windows ([page 17](#))
- Controls ([page 18](#))
- Services ([page 25](#))
- Rules ([page 26](#))

Windows contain controls. The functionality of controls is defined by services and rules.

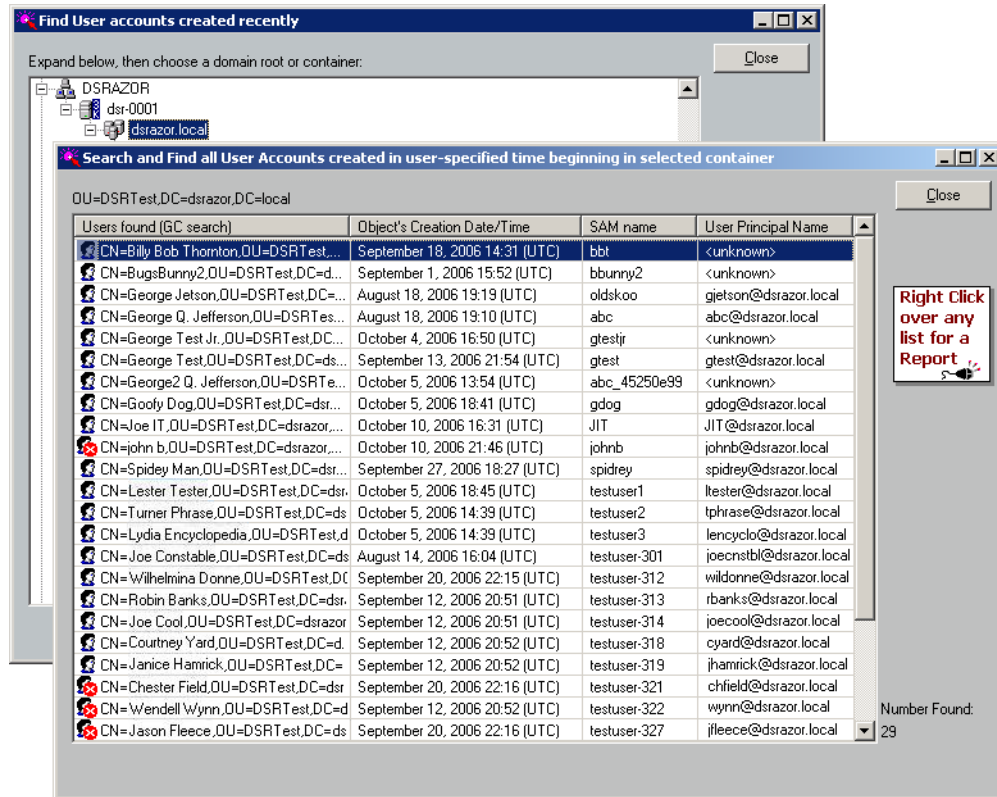
To view what controls and services have been defined for an applet:

- 1** Open the applet in the **Designer**.
- 2** From the **Main** menu, select **File | Window/Control Map**.

About Windows

Windows are the pages that hold the functionality of an applet. An applet can have any number of windows that display when a different applet utility is called for.

Figure 1-6



This example shows two windows in the Find Users created in past X days applet (**newusers2.DSR**). The initial window displayed (in the back) offers a TreeView control that lets you browse Domains and Containers. Selecting a Container and clicking the **Search beginning in the selected container** button control opens the Select Time Rule dialog (not shown in above figure). You can either select a time-based rule type, select/enter a value, and click OK or click the No Rule Filter button to display the second window (in the front), which lists details of every user in the selected Container.

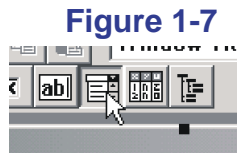
About Controls

Controls are elements of an applet used to hold and interact with data. The data in each control is provided by one or more services. The functionality of a control is determined by the services assigned to it (see [“About Services” on page 25](#)). DSRAZOR uses common Windows screen controls. You can choose from the following controls:

- Dropdown List (see [page 20](#))
- ListView (see [page 20](#))
- TreeView (see [page 21](#))
- Group Box (see [page 21](#))
- BitMap (see [page 22](#))
- Button (see [page 22](#))
- Text (see [page 22](#))
- Check Box (see [page 23](#))
- Edit Text (see [page 23](#))

To place a control in an applet window:

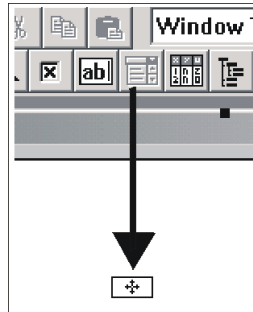
- 1 In the **Designer**, click a control in the toolbar.



This example shows selecting a Dropdown List control.

- 2 Move the cursor over the current window to where the control should be placed.

Figure 1-8



The cursor arrow changes to a control marker.

- 3** Click the mouse to place the control.

NOTE: Do **not** place a control on top of another control. This can cause unexpected behavior in an applet.

- 4** After a control is placed, it must be defined (that is, it must have a service assigned to it). The **Add Service** dialog enables you to assign a service to a ListView control or a TreeView control.

To define the main (top) column of a ListView control, use the ListView **Add Service** dialog. To access this **Add Service** dialog, place a new ListView control and right-click it.

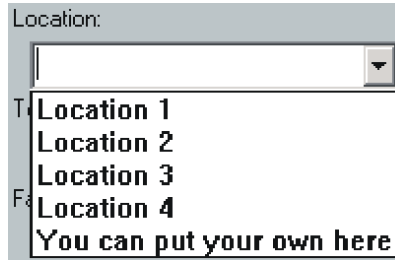
To define a branch in a TreeView control, use the TreeView **Add Service** dialog. To access this **Add Service** dialog, do one of the following:

- Place a new TreeView control and right-click it.
- Right-click a currently defined TreeView control to display. From the **TreeView Services** dialog, click **Add**, **Add Nested**, or **Insert Nested**.

Dropdown List Control

The Dropdown List control is a simple list of items. There is no hierarchy or columns—just a list of items. You only see a single item unless you drop the list.

Figure 1-9



ListView Control

A ListView control has items listed in columns.

Figure 1-10

Membership by full AD/LDAP name	Email Address (primary)	Department	Expiration Date
 CN=Testuser-20,OU=Corporate Accounts	Testuser-20@visualclick.com	QA	<never>

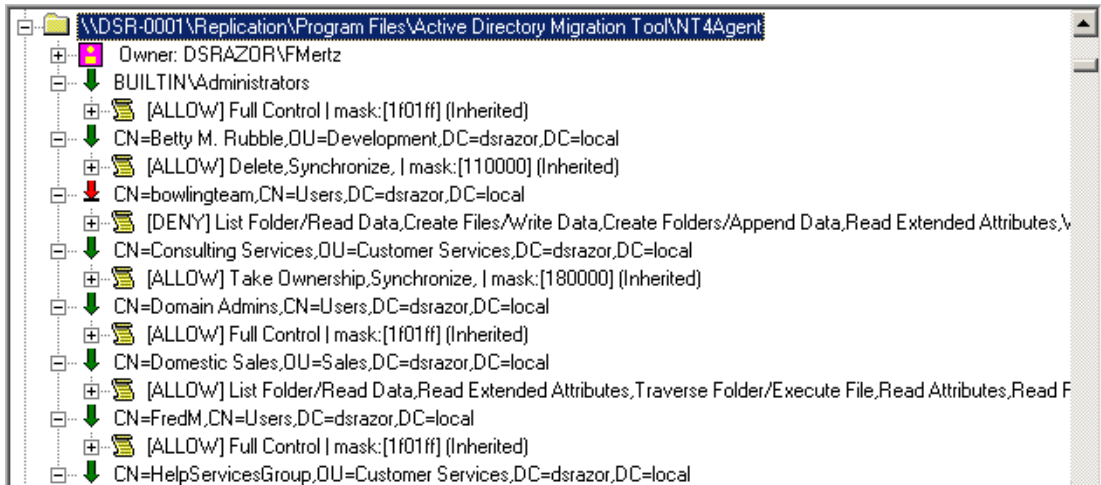
The first column is a list of items with one or more additional columns of singular data items. You can sort a ListView by clicking any of its columns. You may also adjust the size of the columns by dragging them.

Right-click on a ListView control to access the **ListView Columns** dialog.

TreeView Control

A TreeView control is simply a hierarchical list of items, as shown in the following figure.

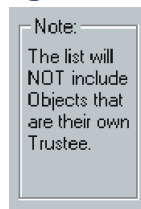
Figure 1-11



Group Box Control

The Group Box control lets you group other controls visually or frame special informational aids. The Group Box itself has nothing more than an optional name. There are no services for Group Box controls.

Figure 1-12



BitMap Control

The BitMap control allows you to place your own graphics onto the applet screen. When you first import a bitmap, it will be in its original size, but you can drag it to a size you prefer. There are no services for BitMap controls.

Button Control

The Button control may close the current screen or open another screen. There are actually many other button services, including bringing up a “canned” window, such as **Change Password** or **Rename**.

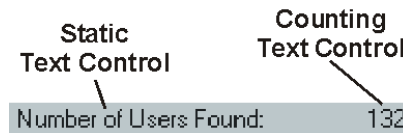
Figure 1-13



Text Control

The Text control allows you to display static text (that is, items you type in, such as labels, notes, or instructions), singular data items, such as the Last Login Date for an Active Directory user, or the count of listed items. The way a Text control is used depends on the service assigned to it.

Figure 1-14



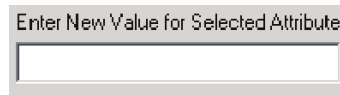
This example uses two separate Text controls. The left control is a static text control. The right control is a count of listed items.

Edit Text Control

The Edit Text control allows you to edit singular data items, such as Password Expiration Date. Some Edit Text control services are for text items, and some are for numbers, Boolean values, and dates. When editing an Active Directory date field, the Edit Text control will be transformed to include a calendar you can choose a date from.

Edits made with Edit controls are applied when a connected button is clicked (see [“Connecting Controls” on page 24](#)).

Figure 1-15

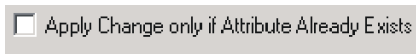


Enter New Value for Selected Attribute:

Check Box Control

The Check Box control is actually a specialized Edit Text control for Boolean values. Changes made to the Active Directory Domain with Check Box controls are applied when a connected button is clicked (see [“Connecting Controls” on page 24](#)).

Figure 1-16



Apply Change only if Attribute Already Exists

Connecting Controls

Connecting controls allows you to use the data from one control for the functions in another control. Any number of controls and almost any combination of controls can be connected. You can connect a control to other controls in the same window or in other windows.

Connecting Controls Example

Two TreeViews are defined on the same window. The first TreeView lists all containers in a domain. The second lists all groups in the container selected in the first TreeView.

To link these two TreeView controls as described:

- 1** Define the first TreeView control to use the service *AD: List All Containers* (see [“About Services” on page 25](#)).
- 2** Define the second TreeView control to use the service *AD: List All Groups*.
- 3** Edit the *AD: List All Groups* service of the second TreeView control and select the first TreeView in the **Connect Service To** section of the **Edit Service** dialog.

About Services

On its own, a control is empty. To display or connect to data, you must associate a control with a **service**. The TreeView and ListView controls can be populated by more than one service at a time.

Services are sub-routines that change or query elements of your Active Directory Domain. Every control except Group Box and BitMap must have at least one service associated with it.

Services are categorized in two separate ways:

- By the controls to which they are associated (ListView, Button, etc.)
- By the services' uses (connection, Active Directory services, trustee, etc.)

When assigning a service to a control, the **Designer** only displays those services that are associated with the control. The services that are displayed are ordered alphabetically in each section.

The next two pages detail the different service categories based on control type.

Listing Services

Provide lists of results (for example, a list of users). You can assign rules to most Listing services that determines the data that is listed (see [“Using Rules to Refine Listing Services”](#)).

Listing services are available for Dropdown List ([page 20](#)), ListView (primary column only—[page 20](#)), and TreeView ([page 21](#)) controls.

Using Rules to Refine Listing Services

Listing services can be further defined with **rules**.

The rules are Boolean and may be compound. Generally, rules act as a filter applied to the results of the service with which they are included (for example, only show users whose names are exactly eight characters long or only start with the letter H). However, some rules govern from where results are gathered (for example, which Organizational Units to search in Active Directory).

Some rules are based on other services (for example, only show users who have not logged in since March 3).

Display Services

Provide a single data item (for example, a user’s full name; the free disk space on a volume; or the server’s percentage of CPU). Also, you may choose the Static Text service and enter your own comments, description, or notes that will be displayed when you run the applet.

Display services are usually used in the secondary columns of a ListView ([page 20](#)) or in the Text control ([page 22](#)); however, Display services are also available for use as rules for Listing services (see [“Using Rules to Refine Listing Services” on page 26](#)).

Button Services

Usually provide for some action, such as closing a window or opening another. Some actions also include Change Password, Reset Intruder Lockout, and Move Home Directory.

Button services are only available for the Button control ([page 22](#)).

Edit Services

Similar to Display services, except that you can change the data that is presented when you run the applet. An Edit service **must** be associated with a Button control (typically **OK** or **Apply Changes**), which determines when to apply the changed data.

Edit services are for the Edit Text controls ([page 23](#)).

Check Box Services

Provide options that are only true or false (for example, whether an account status is enabled or disabled, or whether or not an account requires a password).

Check Box services are available for the Check Box control ([page 23](#)) or the Edit Text control ([page 23](#)). If using the Check Box control, selected is true and unselected is false. If using an Edit Text control, 1 is true and 0 is false.

Turning DSR Applets into Stand-alone Executables

You can save applets as stand-alone executable files so they can be run from workstations that do not have DSRAZOR installed; delegated to others; or automated with a task scheduler.

Stand-alone executable applets must be run from a directory that contains the necessary supporting `.DLL` files.

To save an applet as a stand-alone executable:

In the **Designer**, after testing a new or customized applet, either click **File | Save As EXE** or click the **EXE** icon.

Figure 1-17



If you compiled a stand-alone applet with an evaluation token, the stand-alone applet will stop working when the token expires. When you receive your licensed token, you must change the token file that the **Designer** uses for **Save As EXE**. The applets will have to be recompiled.

To change the token file used for **Save As EXE**:

- 1** In the **Designer**, select **Options | Change Token File(s) for Save As EXE**.
The **Select your Token File(s)** dialog is displayed.
- 2** Select a valid token and click **Open**.